

In Wyoming, state and federally funded early childhood opportunities served more than 8,702 children and families.¹

High-quality early childhood education (ECE) is proven to dramatically improve a child's opportunities for a better future - particularly children from low-income families - while offering parents improved job stability and overall economic security. Research has shown an annual 13% return on investment per child through better education, economic, health, and social outcomes. To ensure all children can access high-quality early learning and care, the federal government partners with states to support local efforts and innovations.

Over time, ECE programs have been created to meet the diverse needs of children and families. A 2017 Government Accountability Office (GAO) report found that these programs work in conjunction to benefit those they serve.

Much of the progress at the state and local level has been made possible by strong partnerships with the federal government aimed at expanding access and increasing quality for more children. Many state and community programs are funded exclusively with federal dollars, while others leverage federal funding to create and expand high-quality early learning and care opportunities beyond what is possible with state funding alone. This resource provides a snapshot of what ECE looks like in Wyoming. To learn more about the specific programs referenced, read [FFYF's ABCs of Federal Early Learning and Care Funding Streams](#) resource.

WYOMING QUICK FACTS

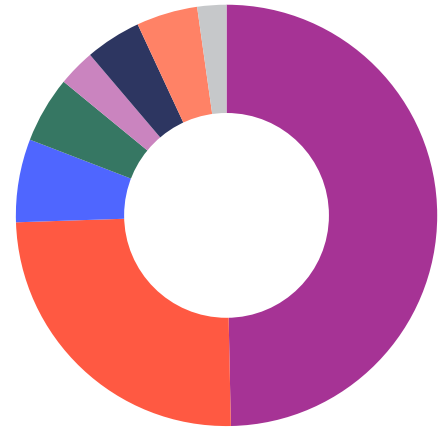
Population Under Six²	46,476
Under Six Living in Poverty³	22.36%
Children Enrolled in Head Start⁴	1,412
Eligible Children Served by Head Start⁵	19.24%
Children Enrolled in Early Head Start⁶	473
Eligible Children Served by Early Head Start⁷	8.64%
Children Under Six Served by CCDBG and Mandatory Funds⁸	2,160
Eligible Children Under Six Served by CCDBG and Mandatory Funds⁹	9.40%
Families Served by the Maternal, Infant, and Early Childhood Home Visiting Program (MIECHV)¹⁰	267
Children Served by the Individuals with Disabilities Education Act (IDEA) Part C¹¹	1,251
Children Served by IDEA Part B, Sec. 619¹²	3,139

¹ This figure includes beneficiaries of Head Start, Early Head Start, CCDF, MIECHV, state-funded Pre-K, and IDEA Parts B Sec. 619 and C. In some cases, children and families are served by more than one program.

Note: The data and information in this resource relies on reporting from prior to the COVID-19 pandemic.

Federal and State Early Childhood Education Funding in Wyoming

Head Start and Early Head Start ¹³	\$24.34 M
CCDBG and Mandatory Funds ¹⁴	\$12.15 M
CCDBG State Match ¹⁵	\$3.12 M
TANF ¹⁶ Funds transferred to early learning and care ¹⁷	\$2.49 M
MIECHV ¹⁸	\$1.40 M
Preschool Development Grant Birth Through Five ¹⁹	\$2.10 M
IDEA Part C ²⁰	\$2.30 M
IDEA Part B, Sec. 619 ²¹	\$1.09 M



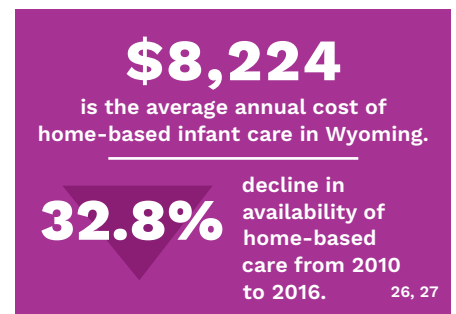
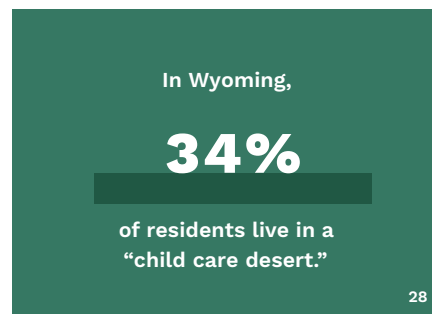
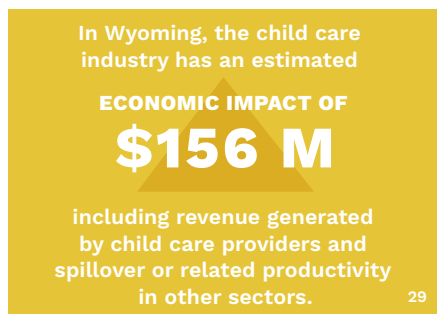
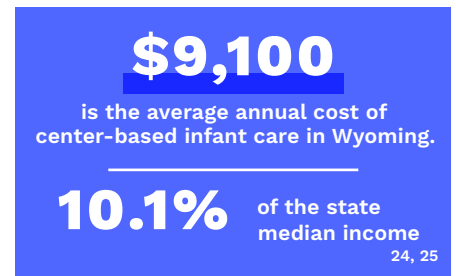
Early Childhood Education and the Wyoming Economy

In Wyoming, there are 26,350 children under age six with all available parents in the workforce.²² In addition to the significant impact of early childhood education on children and families in the short and long term, early learning and care can have an immediate impact on state economies. Access to affordable child care can increase labor force participation and support parents seeking additional education and training, which contributes to higher earnings over an individual's lifetime.



Lack of Supply and High Cost of Care Challenging for Working Families

The cost of care in Wyoming remains a hurdle for many parents who wish to enter or remain in the workforce. Limited access to high-quality, affordable child care presents an additional challenge for working families. Simultaneously, the supply of home-based care, which is often the more affordable and flexible option, has decreased since 2010.



² U.S. Census Bureau (Census) ³ Ibid. ⁴ Office of Head Start Performance Indicator Report (PIR) ⁵ PIR and Census ⁶ PIR ⁷ PIR and Census ⁸ Office of Child Care FY2018 CCDF Data Tables ⁹ Center for American Progress (CAP) Early Learning in the U.S. 2019 ¹⁰ Health Resources and Services Administration (HRSA) ¹¹ U.S. Department of Education ¹² Ibid. ¹³ Head Start Early Childhood Learning and Knowledge Center ¹⁴ Office of Child Care (OCC) FY2019 CCDF Allocations (Based on Appropriations) ¹⁵ Ibid. ¹⁶ Temporary Assistance for Needy Families (TANF) ¹⁷ Office of Family Assistance TANF FY2018 Financial Data ¹⁸ HRSA ¹⁹ 2020 PDG Grant Awards ²⁰ ED ²¹ Ibid. ²² Census ²³ Committee for Economic Development (CED) ²⁴ Child Care Aware of America - The US and the High Price of Care 2019 ²⁵ Ibid. ²⁶ Ibid. ²⁷ CED ²⁸ CAP defines "child care desert" as any census tract with more than 50 children under age 5 that contains either no child care providers OR more than three times as many children as licensed child care slots. ²⁹ CED